**Warning!**

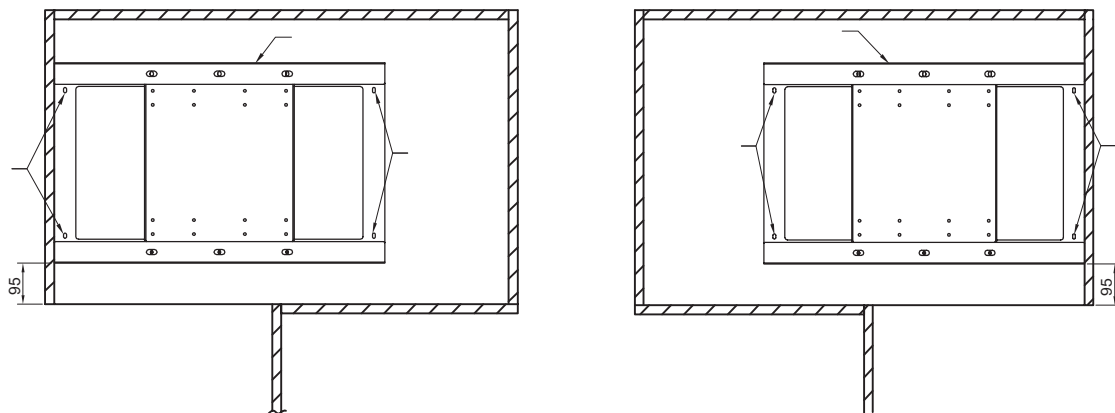
Be sure to read and fully understand this document before installing, operating, your Stazz product. Failure to do so can result in item failure, property damage, or serious injury. Item failure, injury or property damage due to improper installation is not covered by warranty.

**MAXIMIZE SPACE,  
MINIMIZE EFFORT.**

## STEP 1 - Install Bottom Frame (A)

Position the bottom frame (A) against the inside panel of the cabinet. For left-opening installation, align the frame tightly to the left side of the cabinet with its front edge 95 mm from the cabinet edge. For right-opening installation, align the frame tightly to the right side of the cabinet, maintaining the same 95 mm offset. Use ST4\*16 screws (G) to secure the frame.

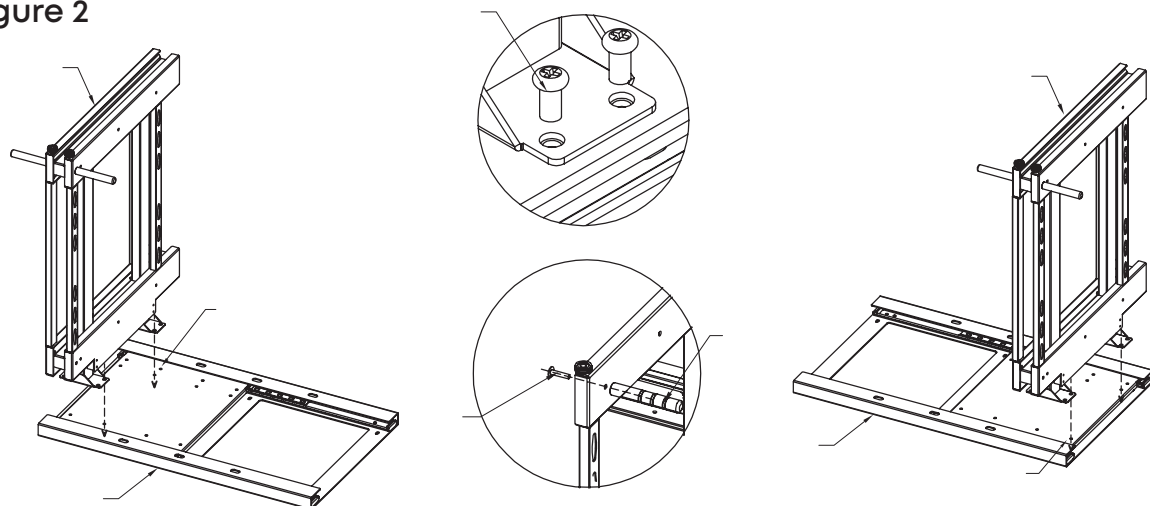
Figure 1



## STEP 2 - Attach Main Frame (B)

Place the main frame (B) onto the installed bottom frame (A) and fix it in place using M6\*8 screws (F). Then, pull out the main frame, and attach the handle (D) using M5\*20 screws (E).

Figure 2



## STEP 3 - Install Baskets (C)

With the main frame extended, install the baskets (C) (flat iron, wire, or plate baskets as per your model) onto the frame as shown. Installation is now complete.

Figure 3

